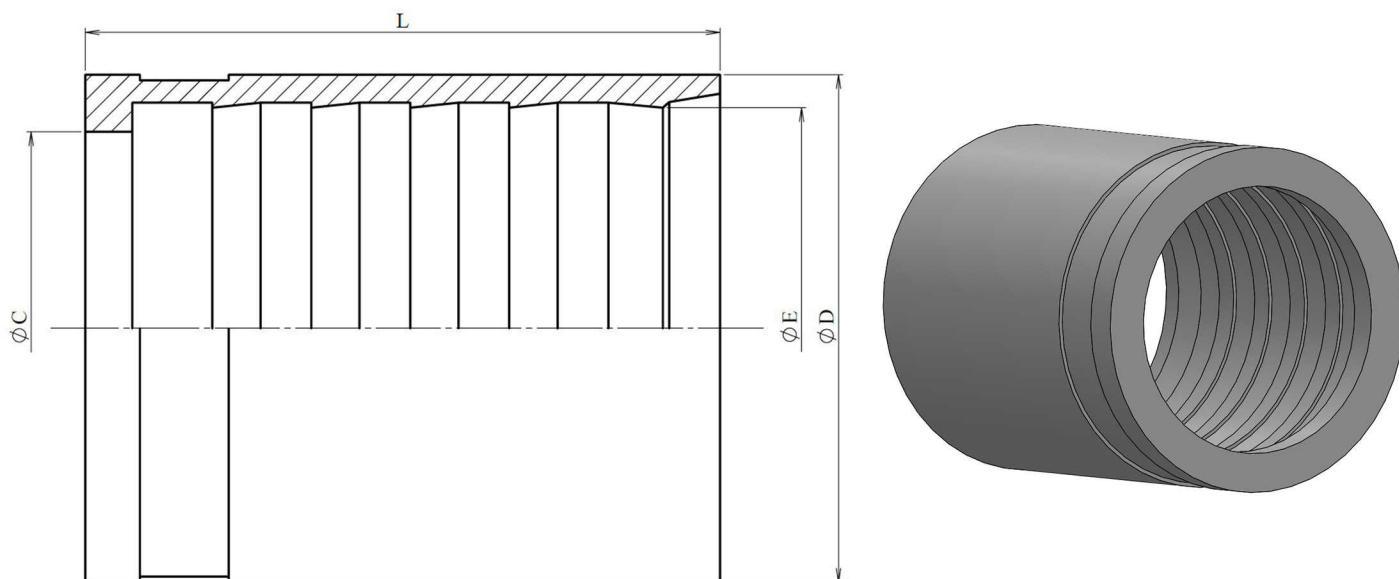


Ferrules R7/R8 and metallic braid / R6

Stainless Steel AISI 316-L



Part n°	DN	L	ØC	ØD	ØE
810140200	1/8"	24	7,1	13	9
810140300	3/16"	26,5	8,5	14	11,3
810140400	1/4"	30,5	11,3	18	14
810140500	5/16"	31	12,8	19	15
810140600	3/8"	33	14,6	22	17,8
810140800	1/2"	34	18,6	26	20,8
810141000	5/8"	36	22	29	24,5
810141200	3/4"	41	25	31,5	27,5
810141600	1"	52	31	40	34,8